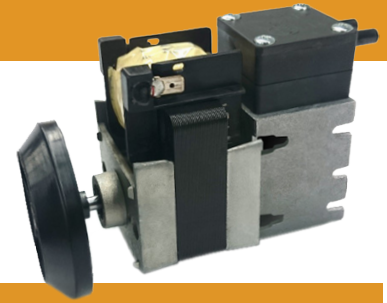


Air & Gas diaphragm vacuum pumps - BSHX18900

Head pump configurations have an integrated filter 400 µm
Applications : Sampling and pressurization

BSHX18900



Characteristics

Rated Voltage	Attainable vacuum	Free air flow	Max pressure	Working pressure range	Start up vacuum	Weight (Kg)	Dimensions (mm)			Mounting dimensions (mm)	
	(mbar)	(L/min)	(Bar)	(PSIG)	(mmHg)		L	W	H	L	H
230V 50Hz	-813	6	1,6	-11,5 to 21,3	-600	1	138	77	98	25,5	36
120V 60Hz		7	1,75	-11,5 to 22,7							

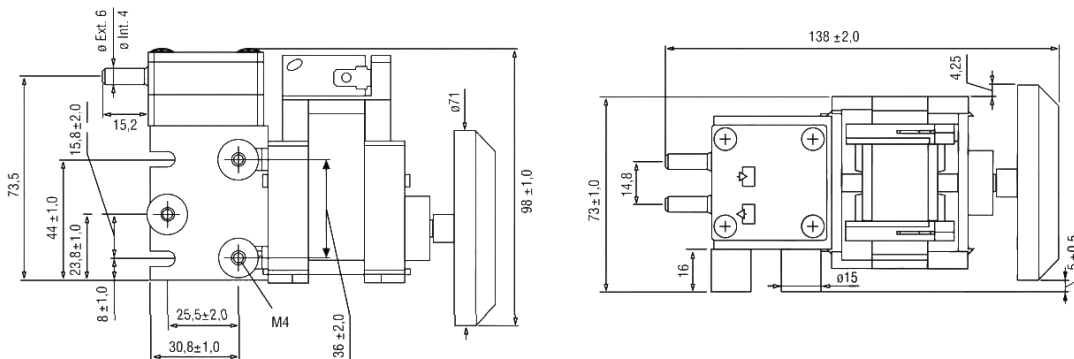
Electrical Data

Motor type	Rated Voltage	Max consumption	IP protection	Insulation class
		(Amps)		
Shaded pole	230V 50Hz	0,3 A	IP 00	Thermal switch 120°C
	120V 60Hz	0,8 A		

Standard head configuration

Available	Head materials
Head Pump	PPS
Diaphragm	FPM
Valves	FPM
O-Rings	SILICONE

Vacuum pumps dimensions



Flow vs Vacuum & Pressure Curves

